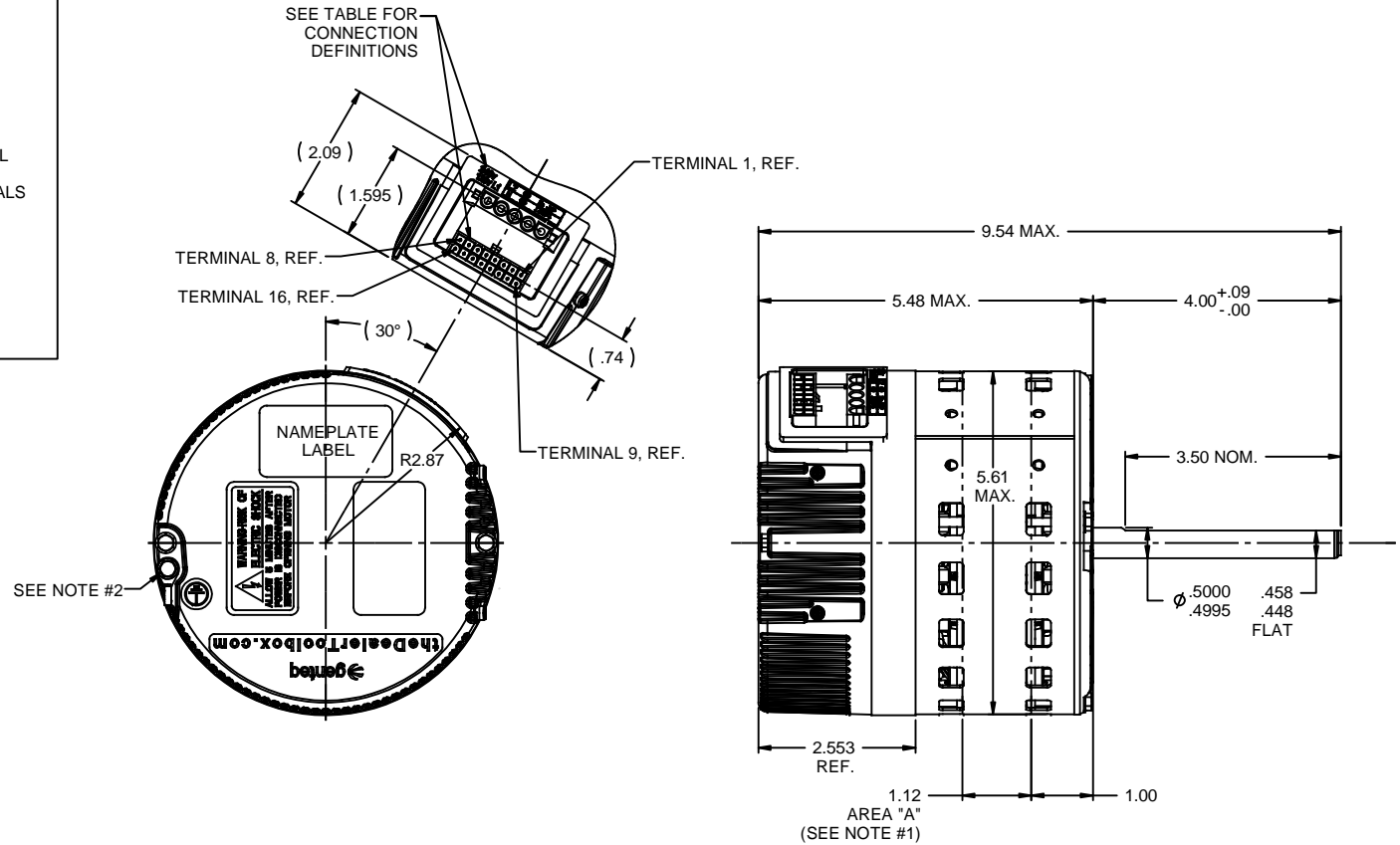


L1	AC LINE	POWER TERMINALS
N	AC LINE	
	GROUND	
JMP	120 VAC: USE LINE INPUT JUMPER 240 VAC: NO JUMPER SEE NOTE #4	SIGNAL TO TERMINALS
1	C1	
2	W/W1	
3	C2	
4	DELAY	
5	COOL	
6	Y1	
7	ADJUST	
8	OUT-	
9	O	
10	BK/PWM	
11	HEAT	
12	R	
13	EM/W2	
14	Y1/Y2	
15	G	
16	OUT+	

NAMEPLATE DATA	
MODEL	5SAD39DLV5004
CUSTOMER NAME	ALL
STOCK #	5661
H.P.	1/3
RPM	N/R
VOLTS	120/240/277
HZ	60/50
AMPS	N/R
ROTATION	CCW/CW

VENTILATION SYSTEM	
SHELL VENTS	OPEN
ENDSHIELD (LE)	NA
ENDSHIELD (OLE)	CLOSED



- NOTES:
- BELLY BAND MUST BE PLACED WITHIN AREA "A" ONLY (STK. + .12).
 - OPTIONAL EXTERNAL #8 SELF TAPPING GROUND SCREW AND TERMINAL MAY BE PROVIDED BY CUSTOMER AT LOCATION SHOWN.
 - DIMENSIONS IN PARENTHESES ARE FOR REFERENCE ONLY.
 - WARNING: APPLYING 240VAC LINE INPUT WITH JUMPER APPLIED WILL PERMANENTLY DAMAGE UNIT.

		TOLERANCES UNLESS SPECIFIED:				DRAWN MAM 08/31/11
		DEC	INCHES			CHK
		X	±.1			APPR
		.XX	±.03	TITLE OUTLINE		SCALE 1:2
		.XXX	±.005	EON FERRITE - 1/3 HP		REF
0	INITIAL RELEASE	MAM	8/31/2011	.XXX	±.005	MATL
NO		REVISION	BY & DATE	CHK	ANG ±1/2°	FINISH
				RFP		PREV
		THIRD ANGLE PROJECTION		NETWORK FILE NAME 5SAD39DLV5004		SIZE B
						DRAWING NO 5SAD39DLV5004
						REV 0
						PAGE 1 OF 1